

Recrutamento Coordenado 2023 – BRASIL

PROMOCAO IN SITU (MAIO 2023)



Nosso Recrutamento

Nossas Escolas

Institut National des Sciences et Industries du Vivant et de l'Environnement (**AgroParisTech**)

École Nationale Supérieure d'**Arts et Métiers** (ENSAM)

École Nationale Supérieure de **Chimie** de Paris (Chimie ParisTech-PSL)

École Supérieure de Physique et de Chimie Industrielle de la ville de Paris (**ESPCI Paris-PSL**)

Institut d'Optique Graduate School (**IOGS**)

École Nationale Supérieure des **Mines** de Paris (ENSMP)

Informações Práticas

Nosso Recrutamento

➤ **NAO SE TRATA DE UM CONCURSO :**

Trata-se de um processo de seleção, realizado conjuntamente com os parceiros no Brasil.

➤ **NAO ENVOLVE EQUIVALENCIA DOS ESTUDOS NA FRANCA E NO BRASIL :**

Cada estudante se candidata a tópicos disciplinares / modelos pedagógicos / estágios que, a priori, **não estariam ao seu alcance na universidade de origem.**

➤ **BUSCA UMA BOA ARTICULACAO ENTRE PARCEIROS :**

Após seu retorno à universidade de origem, cada estudante não deveria retomar seu curso de engenharia / ciências exatas exatamente no ponto em que o deixou... (>> importância dos acordos, dos programas de estudos, **minimizando na medida do possível a duração final requerida para a obtenção dos dois diplomas**).

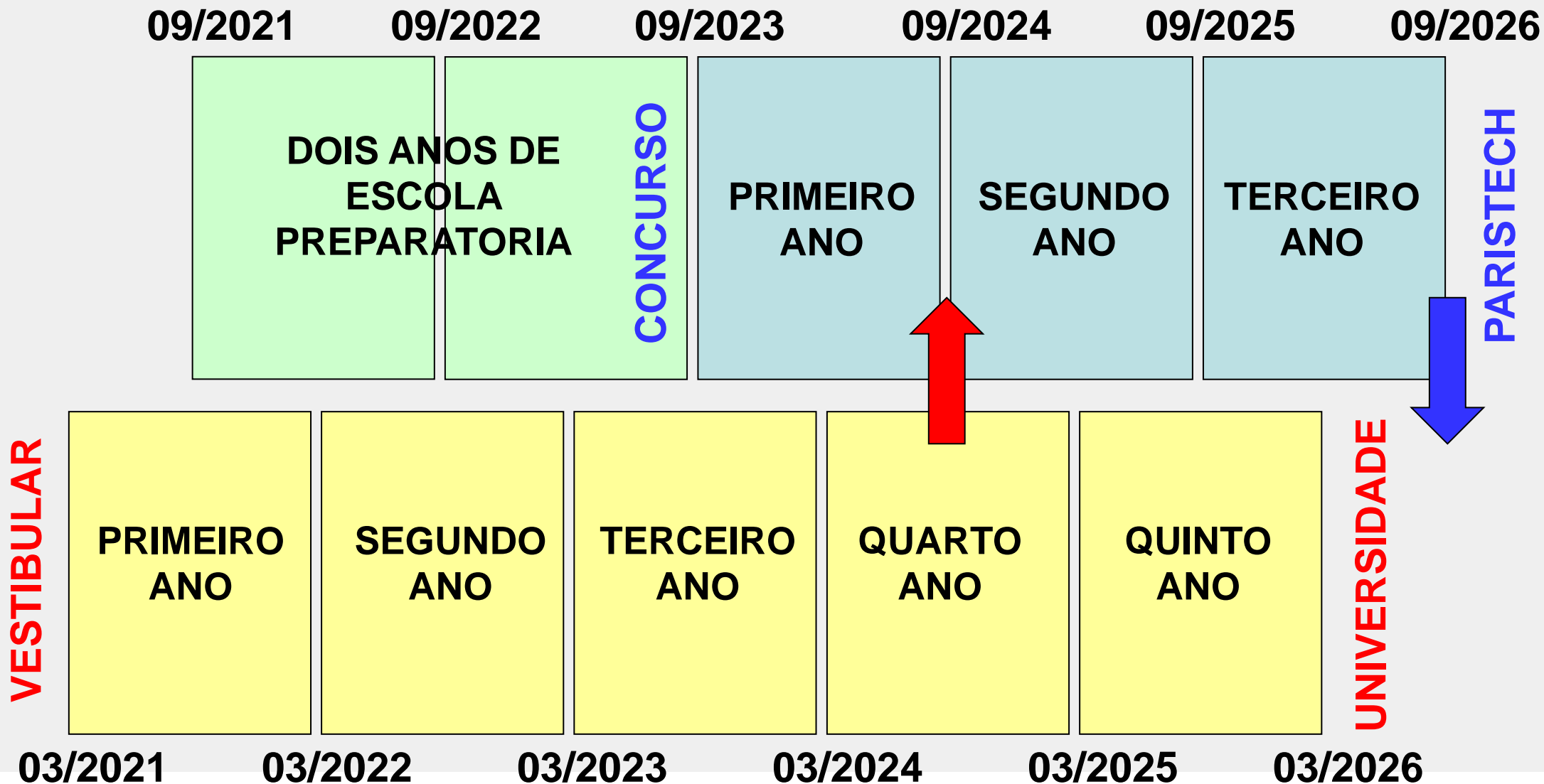
➤ **NAO ENVOLVE A ATRIBUICAO DE BOLSA DE ESTUDOS :**

Uma vez concluída a fase de seleção, cada estudante participa de um ou mais processos de candidatura à uma bolsa de estudos (Eiffel na França, CAPES no Brasil, fundações das escolas, bolsas industriais, etc).

« Grandes Ecoles » e principais especialidades

					 	
Mathematics & applications						✓
Information and communication sciences and technologies					(✓)	✓
Life sciences, Food engineering	✓		✓	✓		
Earth sciences and environmental engineering	✓					✓
Physics, optics				✓	✓	✓
Chemistry			✓	✓		
Energy		✓	✓			✓
Material science, mechanics and mechanical engineering		✓	✓	✓		✓
Industrial engineering		✓				✓
Transport		✓				✓
Economics and social sciences, management, statistics	✓					✓

Calendarios escolares



The added value of the « Diplôme d'ingénieur »

Learning through

Practical exercises
(+30-50% of the courses)

Internships

defining and solving problems designing, prototyping, testing and validating S&T solutions, processes, products, systems, services

Team work
Project management

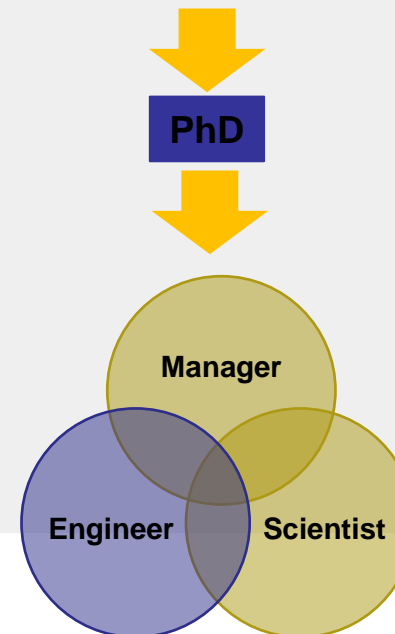
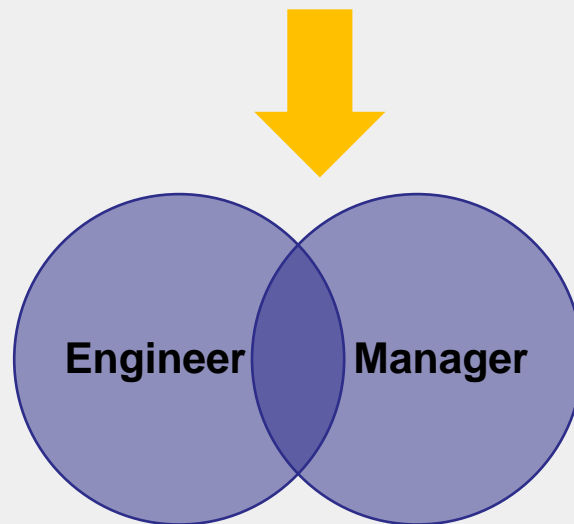
Research-driven teaching

in close contact to businesses

The « diplôme d'ingénieur » enables you to work in any domain (production, R&D, consulting, services)

The « diplôme d'ingénieur » opens very interesting professional opportunities with very good wages

The « diplôme d'ingénieur » opens the doors to an international career



The best way to international businesses...



AgroParisTech





AgroParisTech is a French public institute with a rich history that spans over **180 years**. Its **forward-looking approach** is aimed at addressing the **main global challenges of the 21st century**:

- **Feeding the population in a sustainable way**
- **Protecting natural resources**
- **Fostering innovation**
- **Developing the bioeconomy**

- Internationally renowned for the high quality of its training programmes & research activities
- Research-based training
- Focus on innovation & entrepreneurship
- Two key missions:
 1. To offer high quality training to students and professionals in the different curricula delivered by AgroParisTech,
 2. To advance scientific knowledge, in close association with public and private research centers, main relevant technical-vocational centers and industrial partners.

✓ **QS Top Universities ranking in the field of “Agriculture & Forestry” 2021: 1st in France, 3rd European wide and 4th Worldwide**

✓ **Shanghai Ranking’s Global Ranking, Academic Ranking of World Universities 2020: As leading French HEI in agricultural and environmental sciences and component institution of Paris-Saclay University, AgroParisTech is a key contributor to its success: rank 12 in Agriculture, 35 in Biotechnology, 51-75 in Food**

✓ **Ranking of all Engineering Higher Education Institutions in France 2020: 1st in the field of “Agriculture”**

4 main fields of scientific expertise:

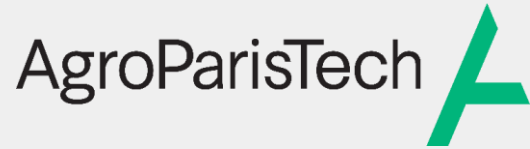
- Agricultural production and forestry
- Food and non-food transformations
- Sustainable management of natural resources and the environment
- Human health



5 Departments of Education and Research:

- Agronomy, Forestry, Water and Environmental Sciences and Technology
- Life Sciences and Health
- Sciences and Engineering for Food and Bioproducts
- Social Sciences, Economics and Management
- Modelling: Mathematics, Informatics and Physics

Diplôme d'Ingénieur



A wide range of choices during the second year:

- 4 different study tracks
 - **Sustainable production, sectors, and territories**
 - **Engineering of food products, biomolecules, and energy**
 - **Environmental engineering and management**
 - **Engineering and health: human, bioproducts, and the Environment**
- **Core-curriculum:** engineering sciences and mathematic modelling, economic and social sciences, management
- 7 modules with a choice of **more than 100 course-units**
- **Apprenticeship track** for engineers

Many opportunities during the third year:

- **20 specialties** in 10 fields e.g.: BioTech, Agricultural Development, Forestry management, Products development, Nutrition, Economics and Company management...
- Possibility to join one of the **44 Master's programmes** offered by **AgroParisTech and its partners**
- Possibility to join a **Master's programme** from **another institution**

And also:

- Team projects, sports, languages, etc.
- Compulsory international mobility:** 200 partnerships with 155 foreign universities from over 47 different countries
- Compulsory internships:** l'Oréal, Danone, Nestlé, Veolia, Suez...

Job prospects:

- +80%** of students get a job **less than 2 months after graduation** and **8%** pursue a **PhD**
- Entry level salary: **38K€/year**
- Main fields: **Agriculture/Forest** e.g. professional agricultural organizations; **Services** e.g. consulting firms; **Industry** e.g. food-processing; **Public Sector and Research**



Student Life

- AgroParisTech is composed of **7 campuses** located across France in attractive cities and with vibrant student life. Engineering students can especially study in **Palaiseau (Paris-Saclay), Nancy or Montpellier.**
- **2,300 students** (16% degree-seeking international students)
- Student organisations and events will shape your student life: sports organisations, cultural and professional venues, student unions, buddy programmes...
- AgroParisTech international students are given priority to rent a room in our student accommodations ideally located throughout our campuses **at affordable prices.**
- **Administrative support** from the International and European Relations Office (including for scholarships).

➤ POSSIBILIDADES DE FINANCIAMENTO:

A. bolsas Eiffel (Campus France, governo francês) !

- Muita concorrência, mesmo entre excelentes estudantes (primeiro da turma, etc);
- Valor mensal de ~1300 euros (bolsa + auxílio moradia), e passagem aérea

B. bolsas CAPES / BRAFAGRI (governo brasileiro) :

- Programa re-iniciado em finais de 2022 !!!
- Valor mensal de ~1300 euros (bolsa + auxílio moradia), e passagem aérea

C. auxílio da Fondation AgroParisTech :

- Concorrência, para estudantes sem bolsa de estudos;
- Valor de 8000 euros (« one shot »)

D. alternância (« apprentissage », « apprenticeship ») :

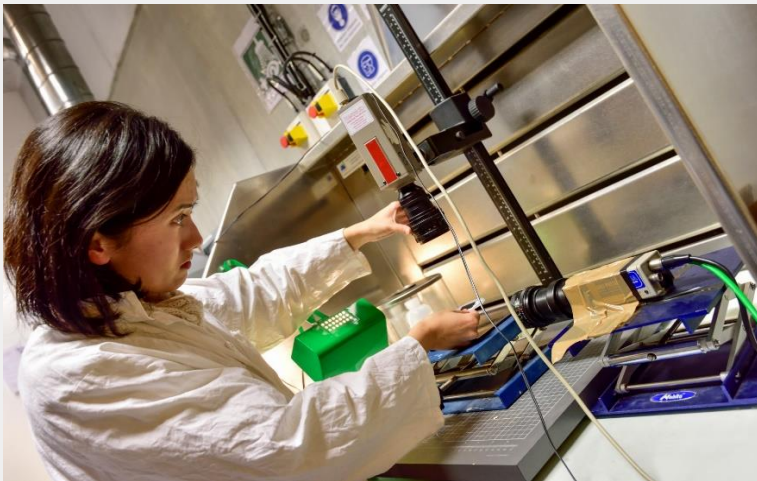
- Seleção interna à escola, identificação da empresa, etc;
- Salário durante os estudos na França

➤ RESIDENCIAS AGROPARISTECH

Arts et Métiers



Talent booster for industry of the future, Arts et Métiers' mission statement: deliver solutions to the needs of every sector of industry



Key figures

- 6000 students
- 1000 international students
- 170 partner universities worldwide

For over two centuries (1780), Arts et Métiers has been spearheading scientific progress and supporting each industrial revolution.

COURSES ANTICIPATING SOCIETY'S TECHNOLOGY NEEDS from undergraduate to doctorate level

- ▶ Arts et Métiers ParisTech Grande École engineering programme (level 7)
- ▶ 10 Specialised engineering programmes (level 7)
- ▶ Bachelor's degree in technology (level 6)
- ▶ + 20 National master's programmes (level 7)
- ▶ Doctoral programme (level 8)
- ▶ Lifelong skills development (Specialised Masters...)

EXCELLENCE LABEL FOR TRANSFERRING OUR RESEARCH TO THE INDUSTRIAL WORLD: Carnot Institute

Research applied to 5 major factory of the future sectors:
Transport/ Energy/ Health tech/ Construction/Manufacturing

15 LABORATORIES pioneering scientific expertise in Industry 4.0 (corobotics, advanced manufacturing systems, innovation & production systems, virtual & augmented reality, biomechanics, additive manufacturing...)

- ▶ Member of EIT Manufacturing
- ▶ Six research chairs in health, environment, clean mobility and smart industrial systems
- ▶ Real-scale Technology platforms (20 Technology hubs)

SUPPORTING TOMORROW'S ENTREPRENEURS

- ▶ Arts et Métiers **talent pipeline and incubator** for the high-tech industry
- ▶ **Training** : business creation & development expertise, technological innovation and entrepreneurship



www.artsetmetiers.fr

STRATEGIC PARTNERSHIPS WITH INDUSTRIAL ORGANISATIONS

11 locations, spread all over in France, for building even **closer ties and insights with industry**

- ▶ Workplace integration
- ▶ Training
- ▶ Innovation

 **Arts et Métiers**
 **campuses**
Institutes



Arts et Métiers ParisTech Grande École engineering programme

- ✓ **Strong background in Mechanical and Industrial Engineering**
- ✓ **Pedagogical approach combining theory & practice**
- ✓ **Multiple and varied choices of specialised final year courses**
- ✓ **Mandatory immersion in companies**

- ✓ **83,5%** work < 6 months after graduation; other **9,5%** pursue their studies
- ✓ **63%** students employed before graduation
- ✓ **Top sectors of employment:** Eng services & consulting (34%), transportation - aeronautics, automotive, rail (13%), construction (10%), ICT...
- ✓ **Top working functions:** Production & quality control (34%), R&D – Innovation (21%), Consultancy (15%)
- ✓ **Average entry salary 41.5K€/year**

➤ **2nd year - core courses** (all campuses):

1 semester Mechanical and Industrial Engineering:

Solid Mechanics/ Materials/ Management/ Product Design/ Product Manufacturing/ Industrial Organisation/Project - Research

1 semester Energy and Industrial Engineering:

*Electronics/Automatics/ Energetics/ Math – Computer Science/ System Design/ System Manufacturing/ Industrial Organisation
Project - applied*

➤ **3rd year** (the campus depends on the specialised course):

1st semester

Specialised course (to be chosen among over 33 offered) in the field of new energies for sustainable development, aeronautics and space eng., management of technological innovation, advanced materials, electrical eng., bioengineering, advanced manufacturing, production systems, virtual & augmented reality, additive manufacturing, fluid mechanics, mechatronics, business creation...

Management of the Logistic Chain/ Strategic Management

Project in laboratory

2nd semester

6-month internship in company (mandatory)

Throughout each year: Foreign Languages, Professional Project Initiative

8 campus in France

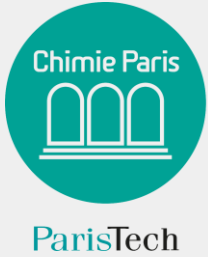
- International relations offices & administrative support, tutoring
- Halls of residence
- Documentation Center and IT room with Internet access
- Infrastructure (gymnasium, climbing wall,...) which allow students to take part in numerous team and individual sports
- National Students' association: sport (sailing, football, rugby, tennis, handball, golf, athletics, skiing, rally...), cultural, scientific, humanitarian or business activities (Shell Eco Marathon, robotics projects, Business lunches...)
- Biggest Alumni in Europe (34 000 alumni)
- Student & alumni mentoring

WHY ARTS ET METIERS?

- One of the best and renown Engineering institution in France
- Get in touch with the industry and acquire business contacts. Arts et Métiers has strong links with companies and, with 11 sites, is close to the economic players. Each campus organises regular meetings with companies (business lunch...)
- Work on our real-scale technology platforms
- Prospect for a PhD at Arts et Métiers by making the most of our labs and research teams which offer a wide range of research areas
- Become part of the biggest Engineering Alumni Association in Europe
- Experience the French language and culture and take advantage of our sites.

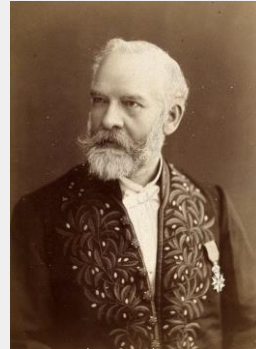
Chimie





Fostering Talents for Tomorrow's Chemistry

Charles Friedel
Founder
(1896)



C. Friedel

20%
international
students



20% Business, management and
human skills



Henri Moissan

Nobel Prize
Henri Moissan
Former Director



Eugène Schueller,
Alumni
(1909)



L'ORÉAL

40%

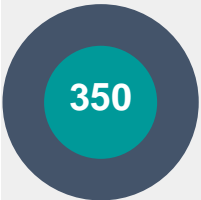


Practical training

12 months



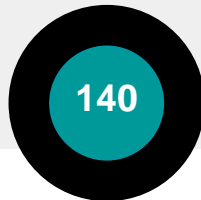
Mandatory internship



Highly selected students
(50% of women)



Researchers, Professors &
Associate Professors



training by research
7 pub. per week



ParisTech



Training top level professionals in chemistry

Analytical

Solid state

Energies

Materials

Theoretical

Environment

Eco-conception

Electro

Chemistry for *Life* driven by **Sustainability** to develop technologies

Molecular

Health

Recycling

Microfluidics

Bio inorganic

Medecine

Process



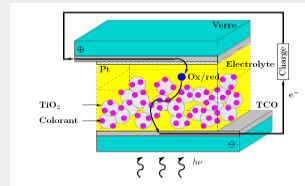
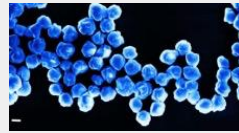
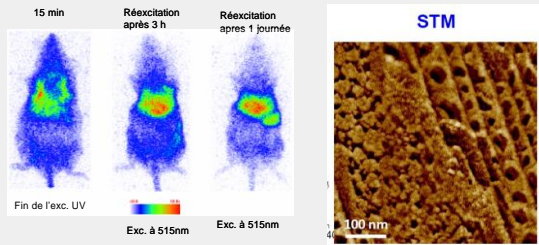


ParisTech

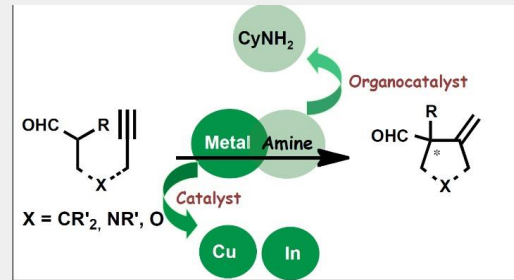


Fundamental & applied research to tackle societal challenges

Imaging and characterization (for health, materials and ancient materials...)

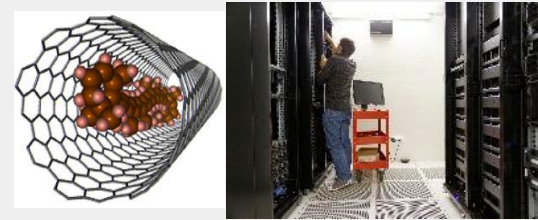


Nano and smart materials (for optoelectronics, energy and medicine)

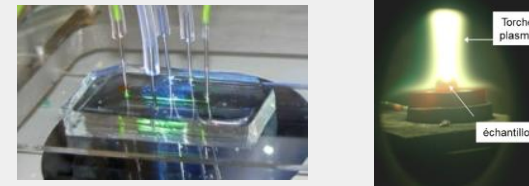


Catalysis Sustainable processes

Modeling and simulation



Chemical Engineering, flow chemistry & microfluidics





ParisTech



Training top level professionals in chemistry

3 years of training
12 months
of mandatory internship

Regular meetings with
industrials
(conferences, workshops, visits)

Engineering Diploma
conferring the grade of
Master of Sc in Engineering

Year 1

**Fundamentals towards
engineering**

Basic courses

Team projects & Soft skills

Management, Economy

Language and Cultures

Worker internship 1-2 months

Year 2

**New applications &
innovation**

Basic courses & applications

Projects (innovation)

Management, Economy

Language

Paid internship - 5 months

Year 3

**Specialization &
entrepreneurship**

Projects

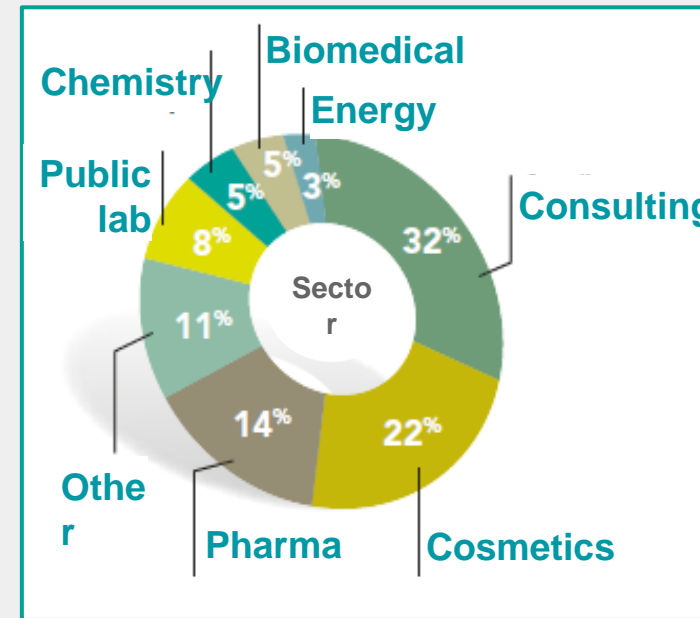
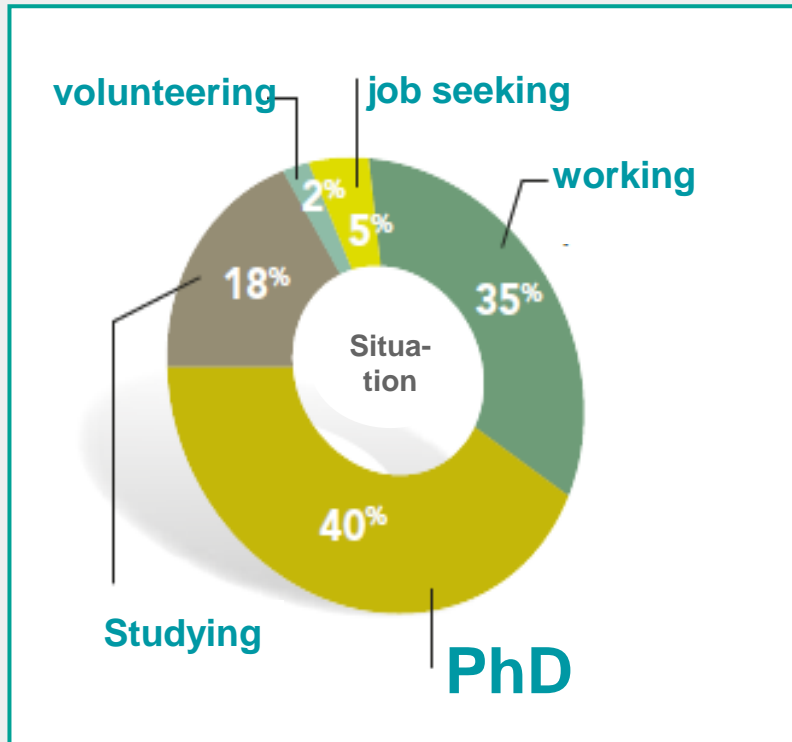
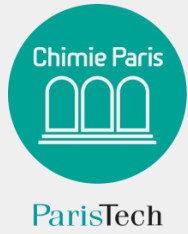
Engineering

Innovation/entrepreneurship

Paid Master internship - 6 months

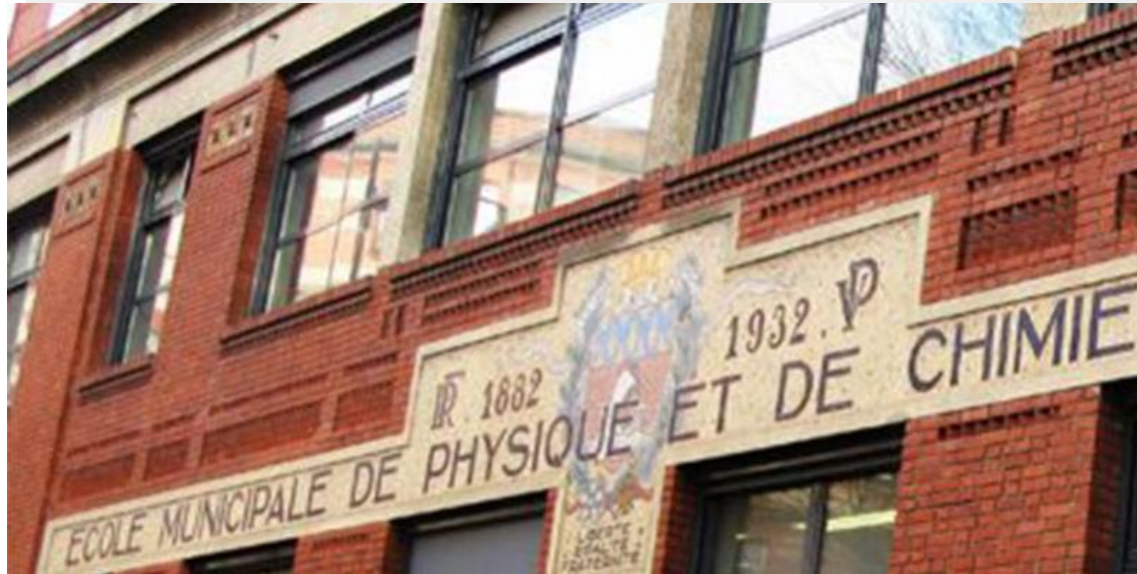
**Year 3: possibility of paid apprenticeship through an agreement
with a company for 2 semesters**








+ 90 % of the engineers students get a job or PhD before the graduation ceremony

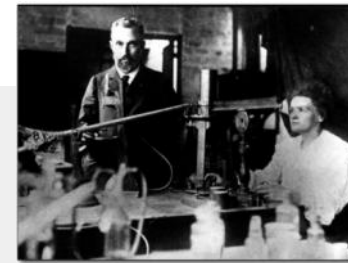


ESPCI





- 
6
 NOBEL PRIZES
- 
≈ 500
 SCIENTIFIC PUBLICATIONS EACH YEAR, OR MORE THAN ONE PER DAY
- 
85
 STUDENT-ENGINEERS PER GRADUATING CLASS
- 
11
 JOINT RESEARCH LABORATORIES
- 
522
 RESEARCHERS, PROFESSOR-RESEARCHERS, POSTDOCTORAL AND PHD STUDENTS
- 
3
 START-UPS CREATED ANNUALLY
- 
70%
 OF STUDENT -ENGINEERS CONTINUE WITH A PHD



Pierre Curie
(Associate Prof.) **Marie Curie**
(Researcher)
Physics Nobel Prize
(1903 - discovery of radium)



Marie Curie
(Researcher)
Chemistry Nobel Prize
(1911 - isolation of pure radium)



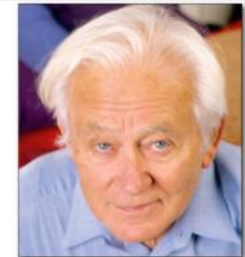
Frédéric Joliot-Curie
(ESPCI graduate)
Chemistry Nobel Prize
(1935 - artificial radioactivity)



Pierre-Gilles de Gennes
(Director 1976 to 2002)
Physics Nobel Prize
(1991 - polymers, liquid crystals, soft matter)



Paul Langevin
(ESPCI graduate, Director 1925 to 1946)
Professor at Collège de France
(sonar, theory of magnetism, etc.)



Georges Charpak
(Distinguished Prof.)
Physics Nobel Prize
(1992- particle detection chambers)

Multidisciplinary Engineering Training through Physics, Chemistry & Biology



Mentoring

80 ESPCI Teachers and Professors
100+ Classes by scientists
< 300 students in total

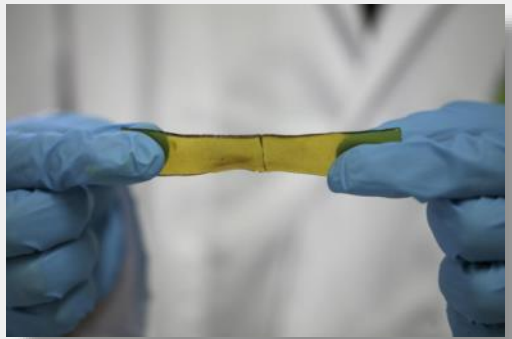
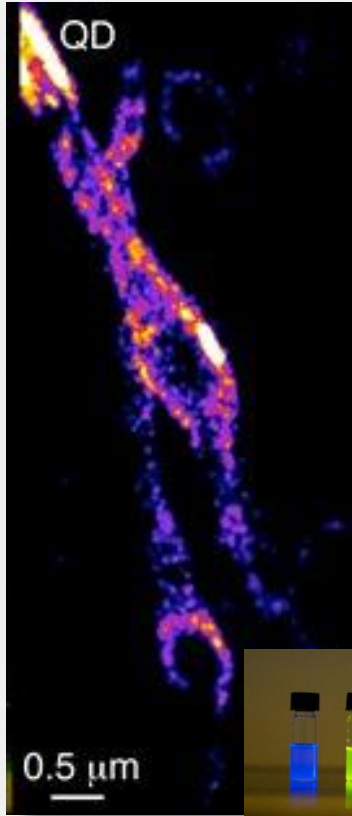
Classes

Lectures: 90 students
Problem solving: 30 students
Advanced topics: < 10 students

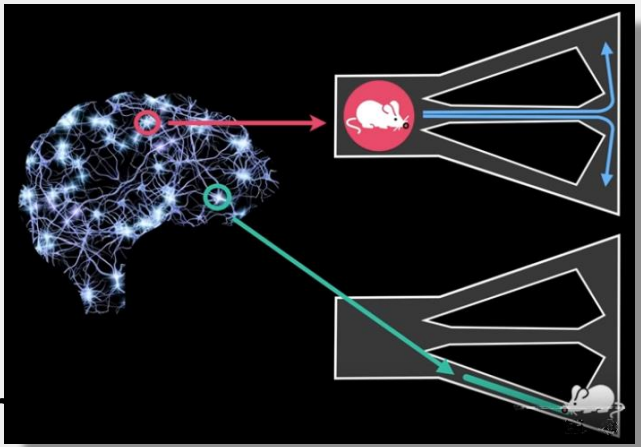
- 3 start-ups per year
- Multidisciplinary approach
- Incubator within ESPCI

 EOS imaging \$51M IPO 2012	 timereversal COMMUNICATIONS Sold 2011	 echosens Sold \$30M 2011	 sensitive Object Sold \$62M 2010	 inventel wireless magic Sold \$130M 2005
 SUPERSONIC imagine The Theragnostic Company™ \$37M raised April 2013 (\$130M total)	 RainDance™ Technologies \$20M raised April 2013	 CYTOO™ \$10M raised November 2011	 Withings \$30M raised July 2013	 LLTECH LIGHT FOR LIFE TECHNOLOGIES \$4M raised 2011
 capsu m science designed for cosmetics \$2M raised (2011) \$5M revenue 35 employees 27 patents	 sculpteo \$3M raised (2012) \$2M revenue 20 employees	 invoxia \$2M raised (2012) \$1M revenue 20 employees	 VisionObjects \$10M revenue 20M users	

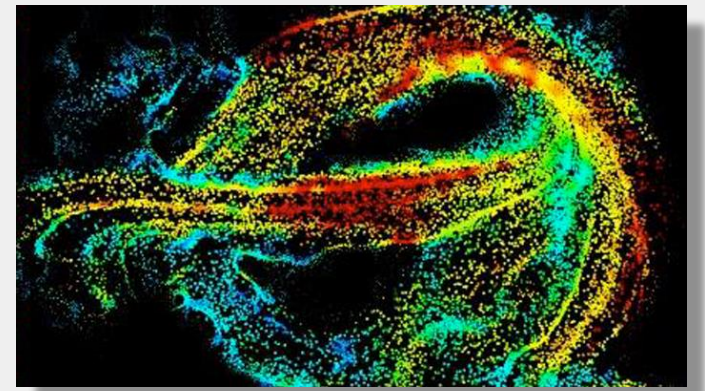
Research



Self healing polymer



Neurofeedback



Ultrafast, ultra-high-resolution ultrasound imaging (brain vasculature)



Image reconstruction
Cannabis effect on neurons



Smart cars

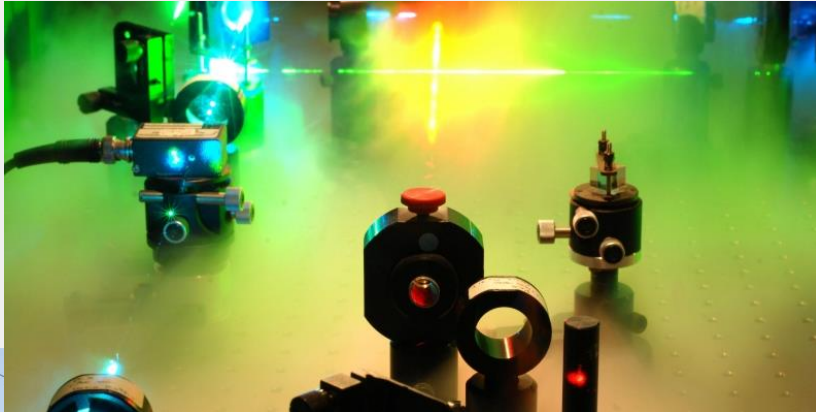


Gravitational wave detection (VIRGO)

IOGS



A LUMINE MOTUS – INSPIRED BY LIGHT, SINCE 1917



Physics of light and its interaction with matter

Widest offer of course in our field

- ✓ Ray optics and aberrations, optical system design
- ✓ Advanced wave optics
- ✓ Instrumentation, Photometry, Detection
- ✓ Imaging, image processing and AR/VR
- ✓ Lasers and electro-optics, non-linear optics, optical fibers, optical telecommunications
- ✓ Biophotonics, Nanophotonics
- ✓ Quantum optics, atom optics
- ✓ Space optics, X-UV optics
- ✓ Solar energy
- ✓ Mathematics, electronics and computer science for signal and image processing
- ✓ *Track in innovation and entrepreneurship*

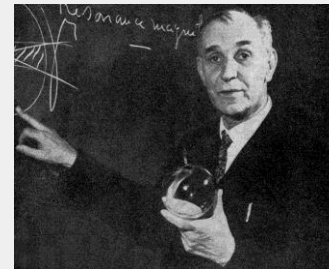


A LEADING INSTITUTION IN OPTICS & PHOTONICS

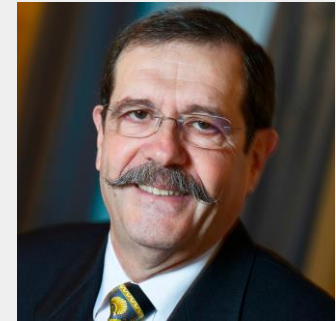
- 2017: celebrated 100 years of research and education in optics and photonics
- 3 campuses: **Paris-Saclay**, Bordeaux, Saint-Etienne
- A rich history since 1917



Charles FABRY
*1st Director
General
(1917-1945)*

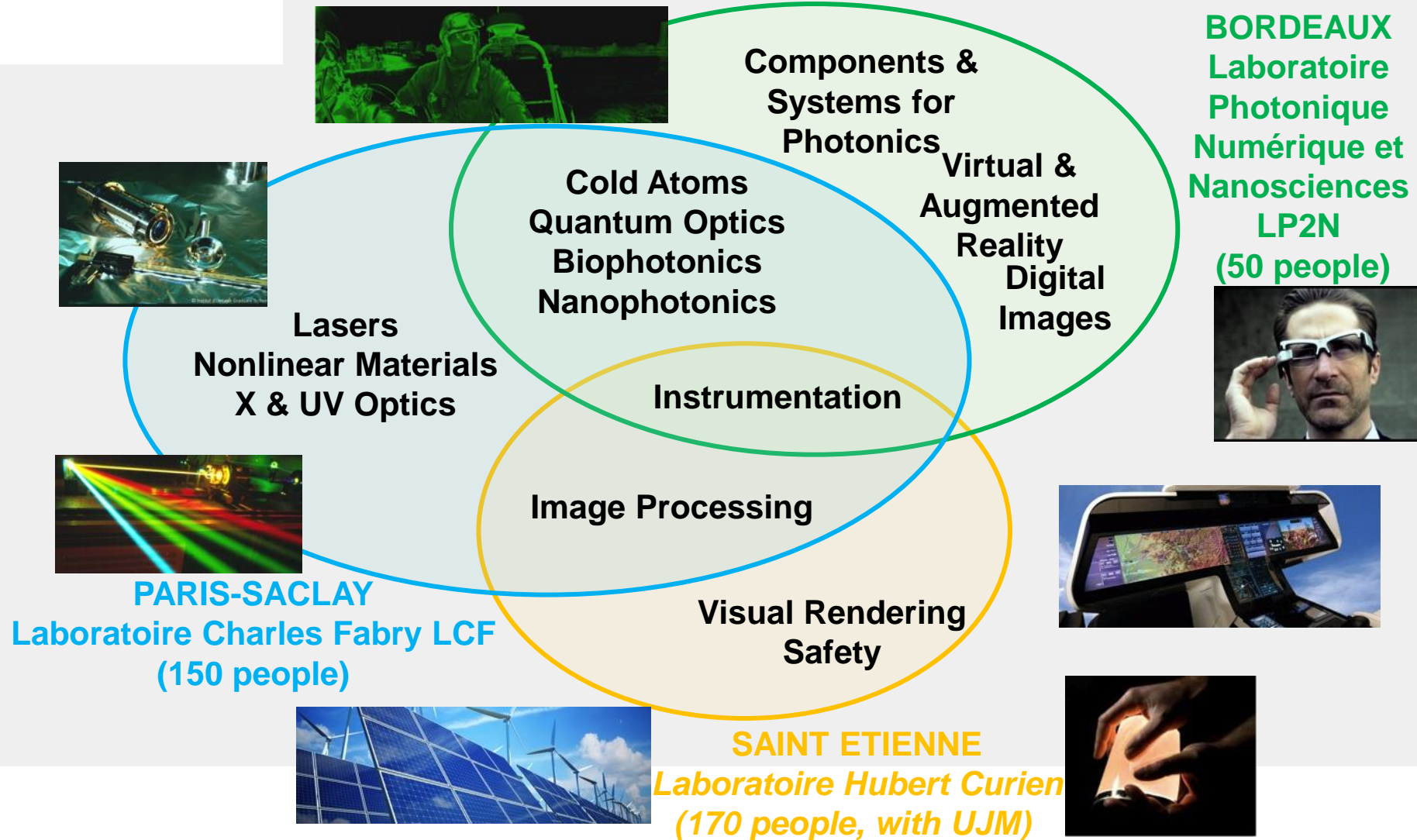


**Alfred
KASTLER**
*President of the
Board (1960s)*



Alain ASPECT
*Augustin Fresnel
Chair Professor &
Scientific Advisor,
Nobel Prize in
Physics 2022*

RESEARCH ACTIVITIES – 3 RESEARCH CENTERS



COURSE CURRICULUM OF THE MScENG PROGRAM (DIPLOME D'INGENIEUR)

- 3 campuses:
 - PS= Paris-Saclay
 - Bdx= Bordeaux
 - StE= Saint Etienne
- 35% of MScEng graduates continue towards PhD
- Top employment industries:
 - Optics, electronics and IT sectors
 - Engineering and IT consulting firms
 - Transportation and mobility sectors
 - Defense and security industry

1 st year = Bachelor final (PS)	2 nd year = Master 1st (PS or Bdx or StE)	3 rd year = Master 2nd (PS or Bdx or StE)
General inter-disciplinary education	General inter-disciplinary education	General inter-disciplinary education
General scientific education	General scientific education	Wide range of openings and specialisations
Photonics related courses	<i>Paris Saclay</i> : Light-Matter Interactions, Signal and Image Sciences, Nanosciences, Extreme (X and UV) Optics	
	<i>Bordeaux</i> : Photonics and Digital Sciences, Virtual Reality, Cognitive Sciences, Physics and Modelling	
	<i>St Etienne</i> : Photonics for Imaging, Lighting, Energy	
(1 month internship)	3 month internship	4-6 month internship

Mines



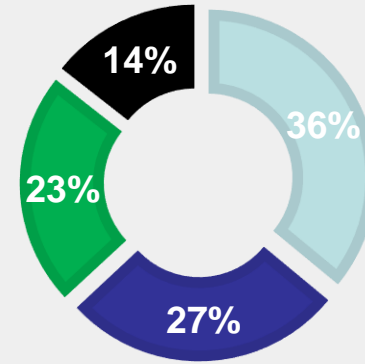
Overview

1/3
international
teachers

120
partners
universities

35 %
international
students

Programs



- Master in Science and Executive Engineering (Diplôme d'ingénieur)
- International Masters
- PhD
- Advanced Masters programs



Innovation and entrepreneurship

- Department Management, Society, Economy
- Specialisation « Innovation and entrepreneurship »
- Chair « Theory and Methods of Innovative Conception »
- Interdisciplinary Institute of Innovation (i3)

7 M
In software
commercialization
activity

74
Patents

20
Companies
created

Our research environment

1st

University in France
for the amount of
contractual
research



2 Nobel prizes

Maurice ALLAIS -
Economics - 1988
Georges CHARPAK –
Physics - 1992



5 departments, 18 researchs labs

- Energy and process engineering
- Earth sciences and environment
- Mathematics and complex systems
- Materials and mechanics
- Economy, management and society

Research oriented to the economic world

- Top research at the intersection of multiple fields
- Very broadly invested key research areas (energies of the future, new materials) but also some niche research areas (health and environment, innovation and competitiveness)
- Emergence of new disciplines (geostatistics, mathematical morphology, control of flat systems)

30
industrial
chairs

200
industrial
partners

1000
/year
Research
contracts
30 M

400
scientific
publications
rank A

Our learning environment

Strong background in fundamental courses,

Mathematics, physics, mechanics ...

with a multidisciplinary approach:

Social sciences, Languages, Sports, Economy and management, Innovation and entrepreneurship

and the possibility to customize your curriculum with 16 fields of specialization

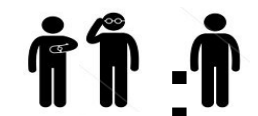


Health	Energy and Environment	Mathematics and Digital Sciences	Materials Sciences	Social and Economic Sciences
<ul style="list-style-type: none"> •Biotechnology 	<ul style="list-style-type: none"> •Soils and subsoils •Geosciences •Processes and Energy •Machines and Energy 	<ul style="list-style-type: none"> •MAREVA (Applied Mathematics, Robotics, Vision and Automation) •Geostatistics and Applied Probability •Digital Engineering of Complex Systems •Information Systems Management 	<ul style="list-style-type: none"> •Atomic engineering •Sciences and Material Sciences 	<ul style="list-style-type: none"> •Public Affairs and Innovation, •Industrial Economics, •Scientific Management, •Conception Engineering •Production and Logistic Systems

51 k average salary (first position)

60% students employed before graduation

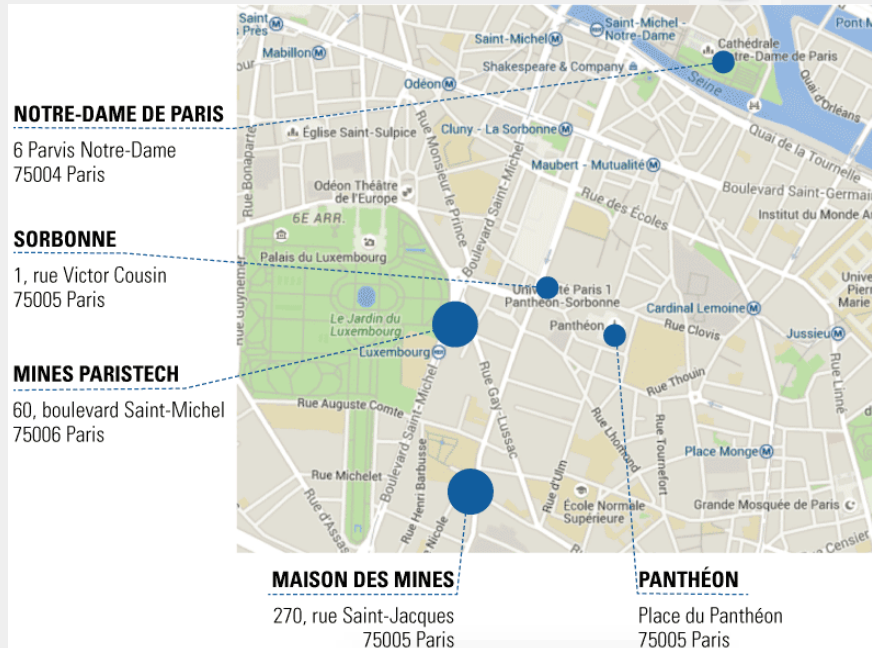
prepared to become managers, in any kind of companies, all over the world.



Our living environment



Located in the heart of Paris 



- A residence 5 minutes walk from school, affordable rent around 340 €/month
- A rich student and cultural life
- Accessibility to many services and facilities (restaurant, library, sports facilities)
- Administrative services at your disposal through the PSL Welcome Desk (health care, visa, scholarships) and buddy system for internationals
- Living costs covered generally by scholarship from the Foundation of Mines Paris of 700€/study month (or other scholarships like Eiffel) and paid internships

Intensive
French
summer
course

85%
students with
scholarships

40 students
associations

15
sports
offered

For more information, please contact: international@minesparis.psl.eu

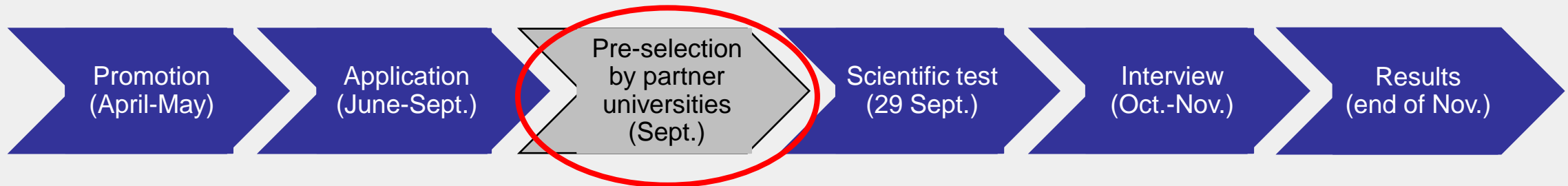
informações práticas



Nosso Recrutamento

- inscrições abertas a partir do dia **1o de junho** : portal "**STUDY WITH US**" !!!
 - <https://studywithus.paristech.fr/fr/le-diplome-dingenieur/paristech-international-admission-program/brazil-admission-programme>
 - todo o processo está inteiramente explicado em português
 - inclui exemplos de questões do teste que será aplicado online dia **29 de setembro**
 - inclui informações sobre taxas escolares
- webinar internacional dia **06 de junho ! inscrições em andamento !!!**
- **PRINCIPAL OBJETIVO DA ENTREVISTA DE MOTIVACAO:**
 - **avaliar a maturidade do candidato** com vistas à mobilidade
- **PRINCIPAL OBJETIVO DO TESTE :**
 - **avaliar a coerência** entre o curso seguido na universidade de origem e o projeto de mobilidade para uma ou mais escolas de nosso grupo

Recrutamento internacional



	Argentina	Brazil	Colombia	China	Asia (except China)	Other countries
Opening of on-line application	1 June 2023					
Application deadline	21 September 2023					
<i>Mock test</i>	27 September 2023					
On-line scientific test	29 September 2023					
Interview period	12-13 October 2023	16-20 October 2023	9-11 October 2023	16-20 October 2023	9-10 October 2023	11-13 October 2023
<i>Scientific interview (if requested)</i>	<i>End October – Beginning of November</i>					
ParisTech Admission Board / Publication of the results	17 November 2023					

Recrutamento internacional



	Argentina	Brazil	Colombia	China	Asia (except China)	Other countries
Opening of on-line application	1 June 2023					
Application deadline	16 de outubro: Sao Paulo (USP, UNESP, UFSCAR, ITA)					
Mock test	27 September 2023					
On-line scientific test	17 de outubro: Porto Alegre (UFRGS)					
Interview period	12-13 October 2023	16-20 October 2023	9-11 October 2023	16-20 October 2023	9-10 October 2023	11-13 October 2023
Scientific interview (if requested)	18 de outubro: Campinas (UNICAMP)					
ParisTech Admission Board / Publication of the results	19 de outubro: Belo Horizonte (UFMG)					
	20 de outubro: Rio de Janeiro (UFRJ, PUC-Rio)					

Taxas scolaires

ParisTech Schools	Double degrees	Individual applicants
AgroParisTech	Argentina, Brazil, Colombia (public partner universities): 0€ China (DD and partner universities): 1786€ in the 2nd year and 4341€ in the 3rd year	4341€ per year – fees may be adjusted on a case-by-case basis up to a full exemption
Arts et Métiers	Waived if paid at home institution	601€/year
Chimie ParisTech - PSL	Argentina, Brazil, Colombia, China: 0€	3570 € per year (1785 € per year for scholarships recipients from their home country)
ESPCI Paris - PSL	Waived if paid at home institution + 150 € students association	No agreement: 850€ = 700 € + 150 € (students association) per year
Institut d'Optique Graduate School	2900 € per year (the regular rate for non-European students is 5000 € per year) Brazil, Colombia: can be reduced to minimum rate of 665 € if a specific DD agreement is signed	2900 € per year for students from partner universities (the regular rate for non-European students is 5000 € per year)
Mines Paris - PSL	Depending on each agreement. AR, BR, COL, CN: Fee waiver for the 1st and 2nd year of studies in France	3500 € per year for European, 5 500 € per year for non European students

Contatos

Juri de admissão:
brazil-admission@paristech.fr

AgroParisTech: incomers@agroparistech.fr

Arts et Métiers: admissions@ensam.eu

Chimie ParisTech - PSL:
international@chimieparistech.psl.eu

ESPCI Paris - PSL: international@espci.fr

Institut d'Optique:
international@institutoptique.fr

Mines Paris - PSL:
international@minesparistech.psl.eu

(questões ?)

